

Condition Report from May 19–22, 2025 (compiled 8-19-2025)

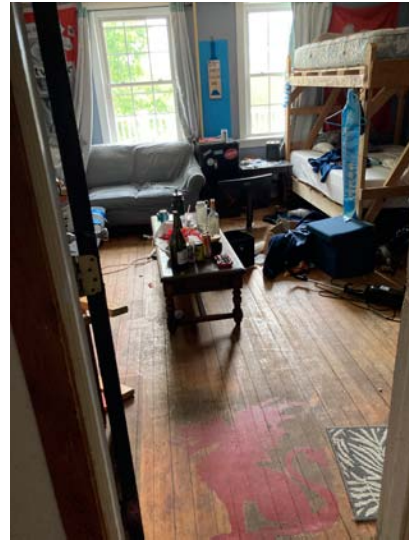
Stills and Video walkthroughs Second Deck Rooms Etc.

SEE IMPORTANT WARNING on next two pages!

Stills from Doubles Wing



Birdcage_2221.JPG

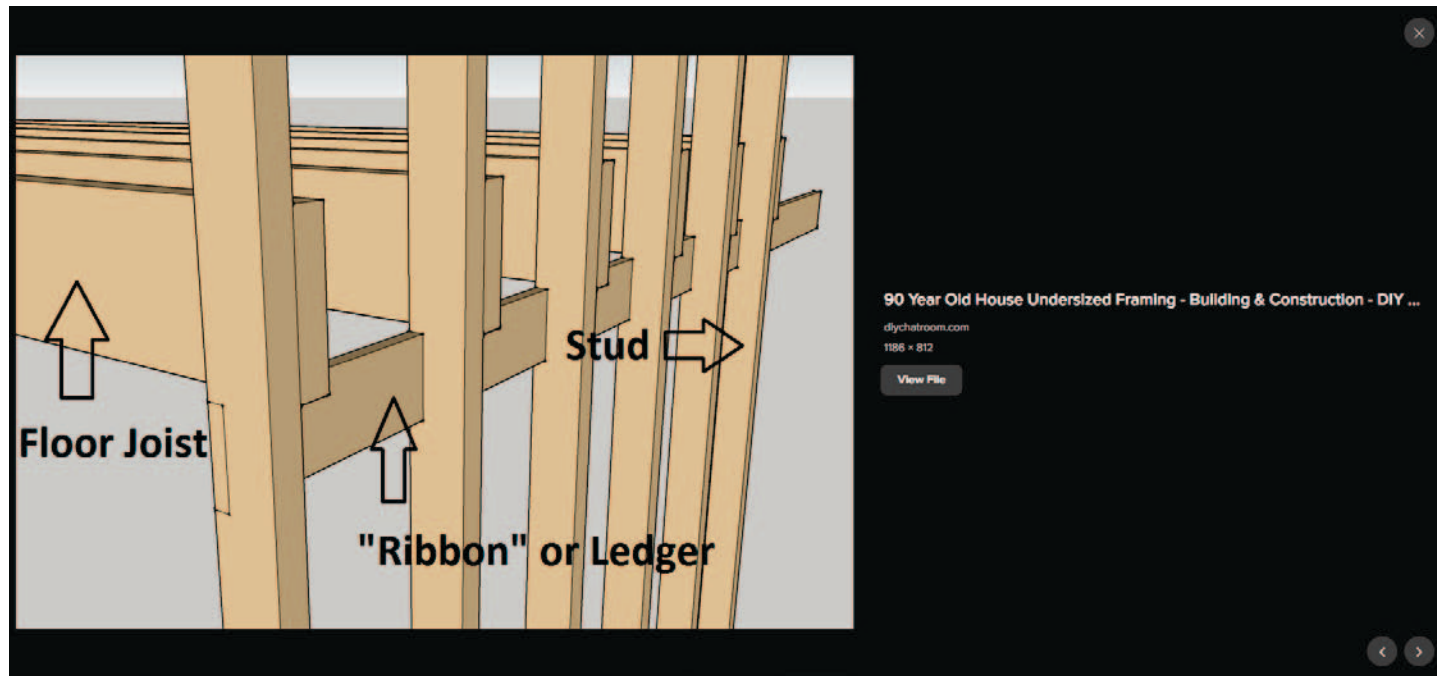


BULLET_2220.JPG



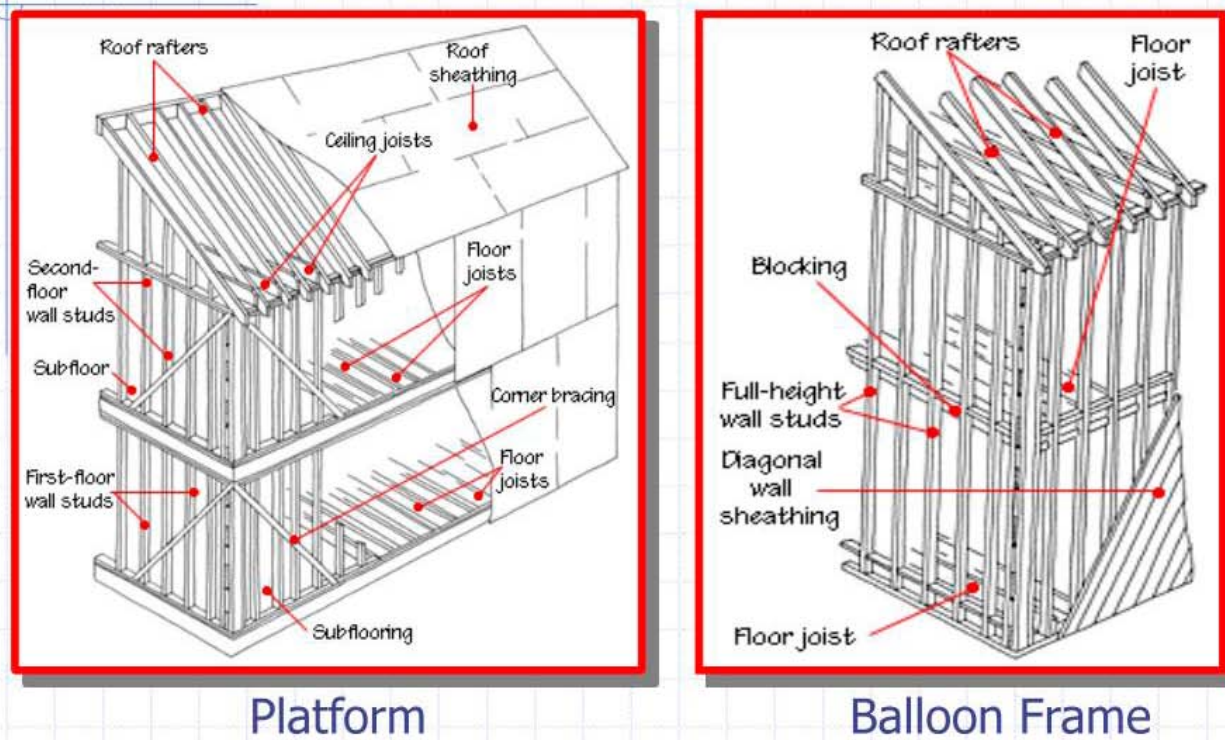
COPA_2230.JPG

DeckRoof_Beach-Bullet_2218.JPG



Balloon_Frame_ledger.png

Platform vs. Balloon Frame



platform-vs-balloon-frame-l.jpg

Before we get to more room stills and videos:

The lipstick will be fine... I have my new big sprayer (Graco X5 Magnum 3000psi airless self-contained with a 5-gal bucket intake hose) to knock out some serious yardage on this Friday. I'm driving back up Thursday afternoon to get set up for the weekend. *...but if we don't pay attention to this ADDENDUM below, our pig will fall on her belly!*

Important Inspection ADDENDUM:

4th Stall exhibits floor displacement from the wall, which may indicate the floor slipping off the ledger ribbon. In 1904, there were no building codes in an industry with no construction standards in means, materials or methods, and is subject to high-amplitude vibrations during school year. Nails of this era were iron vs. modern steel nails and more subject to environmental corrosion.

Slippage is caused variously as the floors sag and elongate (viz. along the long, unsupported runs of the dining room and upper hallway), or the walls bowing out over time and pressure (and both), resulting in what is called a "pregnant house" condition and is treated with through-wall cables and backing plates to girdle the old girl up. I recommend immediate double jackpost and 4x4 support below dining room and a matching one above to carry the hallway of the second deck right outside the 4th stall, using materials at hand in the cellar, including four jackposts. I just need strong dudes to carry shit and hold it this weekend to stabilize it until we can have a closer look. Pending resolution, I would have to say the 4th stall and Catbox may be off the list for Fall Occupation.

This condition may also exist across the hallway in the Cat Box, explaining the precipitous dip from wall to entry door. Until the nasty-ass rug is removed from there, I cannot see the union of wall and floor and I ain't doin' it! I have a number of tasks like that inside for unskilled/semi-skilled volunteers.

BY THE WAY

Shouldn't the kids have their asses up here this weekend, making good on the chaos they made or ignored viz. graduating SENIORS and year-end hoopla.

Brooms and rakes and mops need to be employed en masse. I have resolved hazmat situations in the kitchen since this May visit re: fruit flies and houseflies, through disposal of exposed food and running the dishwasher.

I was told the kids would be up later in June to clean up, which never happened.

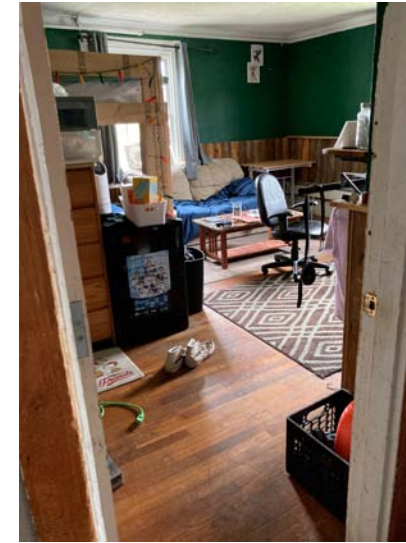
And, by the way, I can still see egg yolk residue from the extreme year-end shit-show in 2021 in the kitchen, DR, and even by the porch doors in the Living Room!



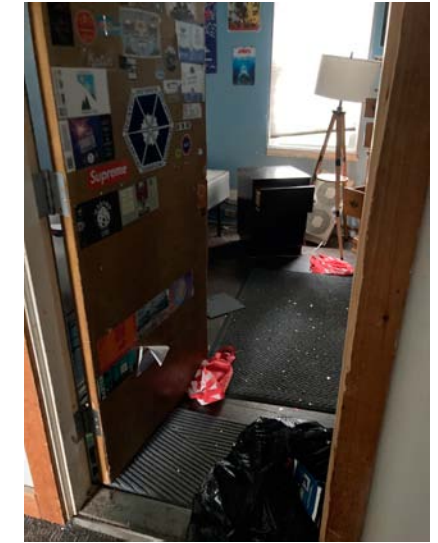
DeckRoof_Beach-Bullet_2219.JPG



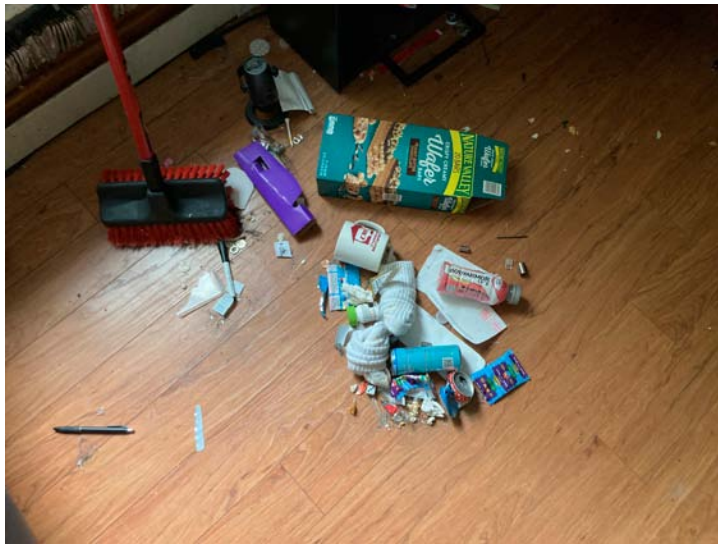
DeckRoof_COPA_2232.JPG



Hearth_2222.JPG



Loft_2227.JPG



DontRemberWhichRoom_2231.JPG



FireEscapeFireDoor_2228.JPG



PRESIDENTS_2223.JPG

Moving On...



LookingDownEastHall_2247.JPG



HallPRES_lookingCopa_2226.JPG



HallwayOutsideBeachCorner_2229.JPG



MainSTAIRCASE_2233.JPG

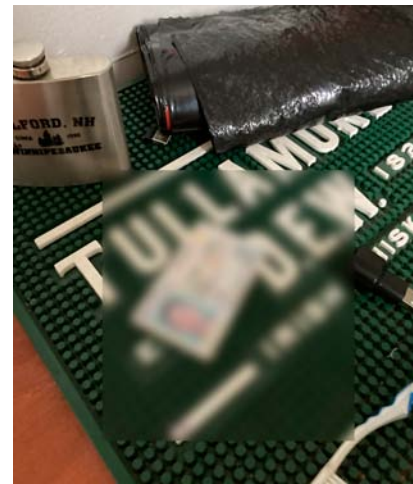


LivingROOM_2248.JPG



LivingROOM_2250.JPG

Moving Up...



Ram_Items__2253.JPG



Ram_Items__2303.JPG

Moving Outside...



Ram_Items__2255.JPG



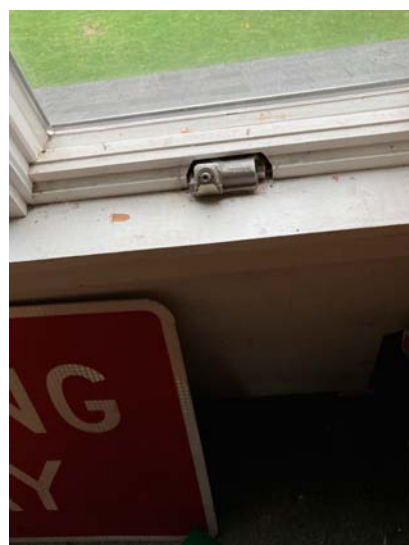
Ram_Items__2256.JPG



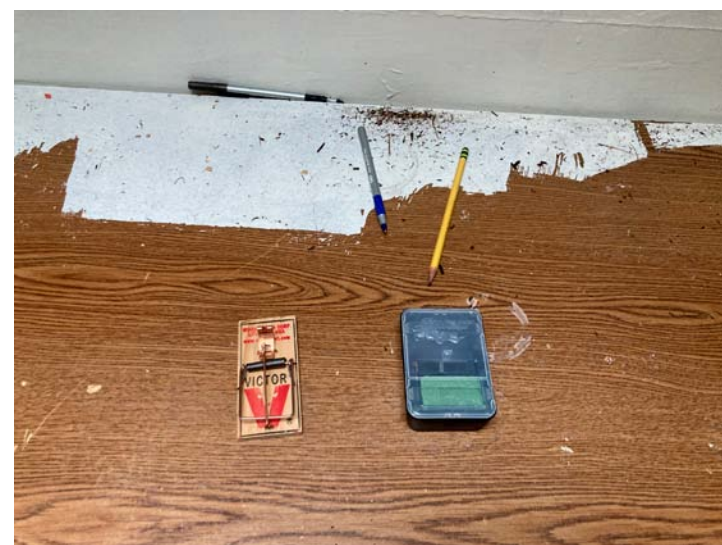
RonniesWindow_Shingles_2200.JPG



RonniesWindow_Shingles_2201.JPG



Ram_Items__2257.JPG



Ram_Items__2301.JPG



RonniesWindow_Shingles_2202.JPG



RonniesWindow_Shingles_2203.JPG



IMG_2206_StoveArea_5_20_25.MOV



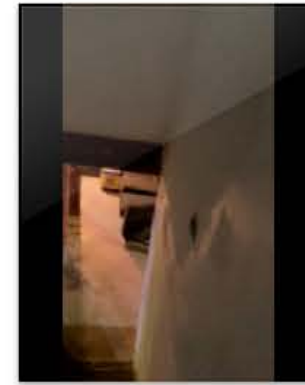
IMG_2254_Ram_DebrisTrailWTF.MOV



IMG_2286_FRONT_ENTRY.MOV



IMG_2287_FrenchDrainPrep.MOV



IMG_2288_CellarTour.MOV



IMG_2289_CellarTour2.MOV



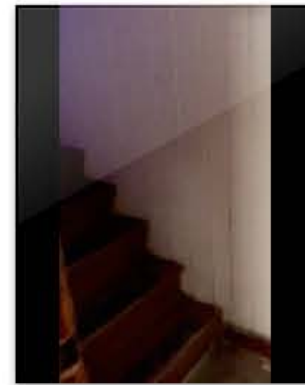
IMG_2291_CellarTour3.MOV



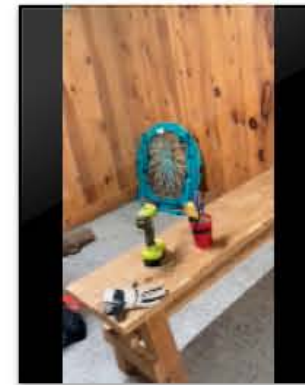
IMG_2292_CellarTour4.MOV



IMG_2293_CellarTour5.MOV



IMG_2294_CellarTour6.MOV



IMG_2297_CellarTour7.MOV



IMG_2298_CellarTour8.MOV



IMG_2300_RamTour.MOV



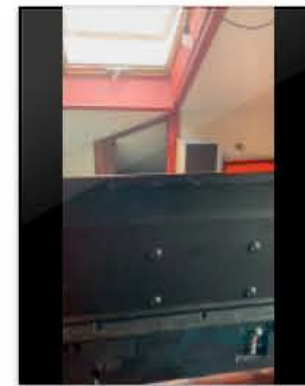
IMG_2302_RamTour2.MOV



IMG_2304_RamTour3.MOV



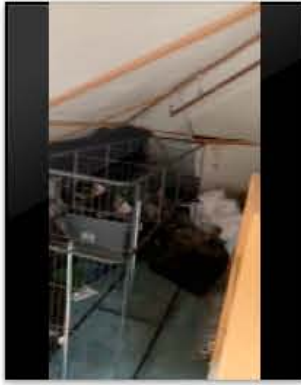
IMG_2305_RamTour4Fridge.MOV



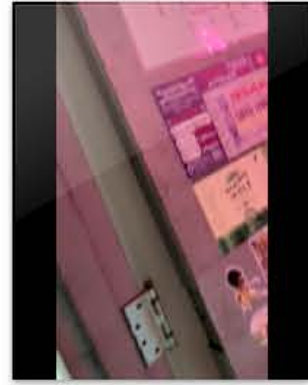
IMG_2306_RamTour5.MOV



IMG_2307_RamTour6.MOV



IMG_2308_RamTour7.MOV



IMG_2309_RamTour8_FIREDOOR.MOV



IMG_2310_LSGWindowArea.MOV



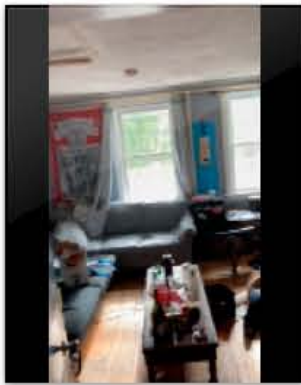
IMG_2311_ViewFromFireEscape.MOV



IMG_2312_RM201_Hearth.MOV



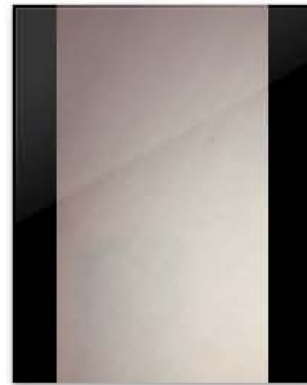
IMG_2313_RM204_LOFT.MOV



IMG_2314_RM205_BULLET.MOV



IMG_2316_RM206_BEACH.MOV



IMG_2317_RM207_COPA_FIREDOOR.MOV



IMG_2320_RM208_WHITEROOM.MOV



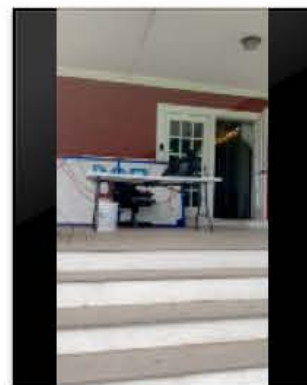
IMG_2321_RM210_4thStall.MOV



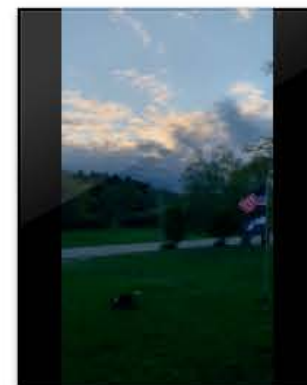
IMG_2322_RM211_CatBox.MOV



IMG_2323_OutdoorView_EOD.MOV



IMG_2324_Outdoor_PORCH.MOV



RiverSunsetClouds_2210.MOV