

March 21-24, 2025

Wall structure behind 2nd window seat was cut for the emergency plumbing repairs during the winter leak of 2023. Repairing the wall structure was the first step of repairs here. Glued and screwed plywood sandwich over torsionally braced 2x6.



BathStructureBefore.JPG



Bath_Wall_StructuralFix_0234.JPG

Back Ram as left by the insurance contractors.



BackRamWindow_1899.JPG

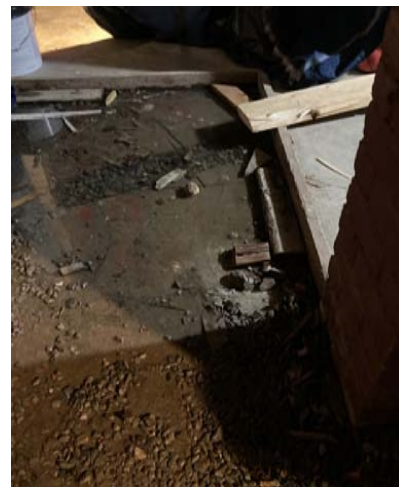


BackRamWindow_1900.JPG

Random house conditions.



DR_Table_1901.JPG



TemporaryHighTide_1874.JPG